



[pfeifergroup.com](http://pfeifergroup.com)



Sawn timber



# PLANTS

*We are local - on a global basis! Our international market presence is defined by the collaboration between our sales and production sites and enables us to service every customer just in time.*



## *1 Unterbernbach*

**Cutting output:** 930.000 scm of round log

**Spruce and pine**

**Sawn timber:** 500.000 m<sup>3</sup>



## *2 Uelzen*

**Cutting output:** 600.000 scm of round log

**Pine**

**Sawn timber:** 310.000 m<sup>3</sup>



## *3 Lauterbach*

**Cutting output:** 1.000.000 scm of round log

**Spruce and pine**

**Sawn timber:** 500.000 m<sup>3</sup>



## *4 Kundl*

**Cutting output:** 990.000 scm of round log

**Spruce**

**Sawn timber:** 500.000 m<sup>3</sup>



## *5 Imst*

**Cutting output:** 100.000 scm of round log

**Spruce and fir**

**Sawn timber:** 50.000 m<sup>3</sup>



## *6 Chanovice*

**Cutting output:** 500.000 scm of round log

**Spruce**

**Sawn timber:** 270.000 m<sup>3</sup>



# Sawn timber

## Cutting



Cutting on modern Link and EWD chipping saw-lines exclusively with circular saw cut, means we can guarantee smooth surfaces, cutting precision and dimensional accuracy.

## Sawn timber grading



Sawn timber is graded visually on high-performance grading machines by continuously trained personnel supported by modern scanner technology immediately after cutting. Dimensions are always packaged according to thickness, width, length and quality.

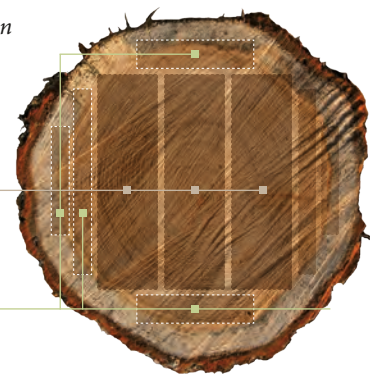
## Drying

In our drying chambers, the sawn timber is dried to the desired moisture content and subsequently sorted to the agreed grade. During this process, every board is once again checked for its moisture content.

*Cut view optimisation makes the best out of every log.*

Centre boards

Side boards



## Standard grading for boards

We grade boards on the basis of visual criteria depending on their intended use in accordance with German and Austrian grading regulations; quality standards are always applied consistently.

### A grading 0 – 3

Square-edged, free from blue and red stain, shake, worm and insect infestation, few black knots and resin pockets, cross cut at both ends

### AB grading 0 - 4

Sawfalling, generally sharp-edged, slight blueness and red stripiness admitted, free from rot, capped on both sides

### B grading 2 – 4

Industrial grade, generally sharp-edged, blueness and fingernail scratching resistant red stripiness admitted, free from rot, occasional insect attack admitted, capped on both sides

### C grading 4 / 5

Some wane, blue stain, red rot and insect infestation tolerated, cross cut at both ends

### Side boards/packaging boards 3 / 4 / 5

Slight wane and slight discolouration admitted, free from worm attack

### Side boards / packaging reject 5 / 6

Large wane, occasional cracks and occasional rot admitted



# Range

- Gluelam lamina for visible and non visible quality
  - Rough sawn timber for finger-jointed construction timber in visible and non visible quality
  - Sawn Timber from small logs for wood panels
  - Sawn Timber from small logs and special grading for planer mills
- Sawn timber for packaging, pallets and cable drums
  - Centre layers for parquet and glulam panels
  - Shuttinger timber
  - Sawn timber for flooring and decking
  - Solid timber squares
  - Special dimensions as per customer specifications
  - Fresh, unslatted or slatted, anti-blueness treatment optional\*

PLANT	UNTERBERNBACH	UELZEN*	KUNDL	LAUTERBACH*	CHANOVICE
TYPE	SPRUCE - PINE	PINE	SPRUCE	SPRUCE - PINE	SPRUCE
Thicknesses	12 – 130 mm	12 – 125 mm	10 – 120 mm	12 – 160 mm	13 – 160 mm
Widths	70 – 300 mm	70 – 245 mm	70 – 300 mm	70 – 315 mm	60 – 350 mm
Lengths in metres	<b>Spruce:</b> 5,10   5,00   4,80   4,50   4,20   4,00   3,90   3,60   3,00 <b>Spruce/Fir/Pine:</b> 3,60   3,00   2,50	<b>Pine:</b> 2,40   2,00	<b>Spruce:</b> 5,00   4,00   3,50   3,00	<b>Spruce:</b> 5,00   4,00   3,50   3,00   2,40 <b>Pine:</b> 4,00   3,50   3,00 <b>Spruce/Fir/Pine:</b> 2,40   2,00	<b>Spruce:</b> 5,00   4,00   3,50   3,00

THICKNESS in mm	WIDTH in mm	QUALITIES	STANDARD DRYING
CENTRE BOARDS SPRUCE			
29 / 32	122 / 190 / 200	0 – 3 / 2 – 4 / 4 – 5	11%
38	175 / 200 / 225 / 255	0 – 3 / 2 – 4 / 4 – 5	11%
43	125 / 150 / 165	0 – 4 / 2 – 4	15%
45	90 / 110 / 130 / 150 / 170 / 190 / 210 / 250	0 – 3 / 2 – 4 / 4 – 5	11%
46	210 / 235 / 255 / 275	0 – 3 / 2 – 4 / 4 – 5	11%
50	100 / 125 / 150 / 170 / 190 / 210 / 230 / 250	0 – 3 / 2 – 4 / 4 – 5	11 / 15%
63	105 / 125 / 145 / 165 / 185 / 205 / 225 / 245/265/285	0 – 4 / 4 – 5	15%
84	105 / 125 / 145 / 165 / 185 / 205 / 225 / 245/265/285	0 – 4 / 4 – 5	15%
105	105 / 125 / 145 / 165 / 185 / 205 / 225 / 245/265/285	0 – 4 / 4 – 5	15%
125	125 / 145 / 165 / 185 / 205 / 225 / 245/265/285	0 – 4 / 4 – 5	15%
146	146 / 207 / 247	0 – 4 / 4 – 5	15%
CENTRE BOARDS PINE			
35	95 / 120 / 225	0 – 4 / 4 – 5	17%
37	250	0 – 4 / 4 – 5	17%
68	118	0 – 4 / 4 – 5	17%
76 / 78	96/98	0 – 5	17%
96	96/116	0 – 5	17%
SIDE BOARDS SPRUCE			
12, 13	60 / 70	3 – 5	fresh
14, 15	70 / 75 / 95	3 – 5	fresh
17	75 / 78 / 95 / 98 / 115 / 133	3 – 5	fresh
18	140 / 160	3 – 5	fresh
21	95 / 115	3 – 5 / 5 – 6	fresh
22, 23	78 / 100 / 120 / 125 / 145 / 150 / 175 / 200	3 – 5 / 5 – 6	KD 17 %
25	100 / 125 / 150 / 190	3 – 5 / 5 – 6	KD 17 %
28	98 / 140 / 150 / 180 / 200 / 210	3 – 5 / 5 – 6	KD 17 %
31	120 / 145 / 160 / 210	3 – 5 / 5 – 6	KD 11 %
33	150 / 170 / 190 / 210 / 230 / 250 / 275 / 290	3 – 5 / 5 – 6	KD 11 %
38	175 / 195 / 215 / 235 / 255	3 – 5 / 5 – 6	KD 11 %
SIDE BOARDS PINE, PINE/SPRUCE MIXED			
22	100 / 120 / 145 / 200	3 – 5	KD 17 %
25	155 / 190 / 205	3 – 5	KD 11 %
35	190	3 – 5	KD 11 %

# Facts



## Performance

Pfeifer produces timber in accordance with the strictest quality standards at five locations in Europe. Our timber production capacity in excess of 2 million cubic metres makes us one of Europe’s leading sawmills.

We always have sufficient profiled timber and timber in various dimensions in our storage facilities that is available to our customers at short notice.

## Environment

Our round timber is exclusively sourced from sustainably managed forestry – predominantly from our region. The use of wood binds the harmful greenhouse gas CO<sub>2</sub> in the long term and therefore effectively lowers emissions.

## Logistics

Today, we are represented through our products in 75 countries and can therefore fall back on an outstanding logistics network.

- ≡ Truck
- ≡ Railway Wagon
- ≡ Container
- ≡ Break bulk shipping



The contents of this document have been prepared with the utmost care. However, despite all efforts and checks, mistakes and typographical errors may be possible as a result. The publisher accepts no liability for the accuracy, completeness or actuality of the information provided. In particular, technical changes and amendments to the product descriptions are reserved at all times. Any use or other application of this document without the express permission of the publisher is not permitted and can result in both civil and criminal proceedings.





Sales:

PFEIFER TIMBER GMBH

Mühlenstraße 7 · D-86556 Unterbernbach

Tel.: +49 8257 81-0

Fax: +49 8257 81-220

schnittholz@pfeifergroup.com

PFEIFER TIMBER GMBH

Fabrikstraße 54 · A-6460 Imst

Tel.: +43 5412 6960 0

Fax: +43 5412 6960 200

holzbau@pfeifergroup.com



Sawn timber

Single- & three-ply panels

Glulam

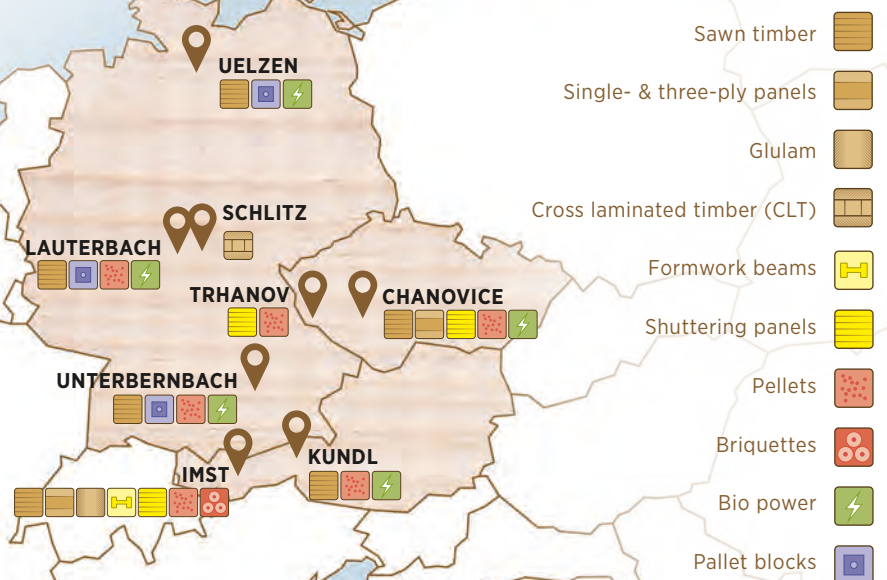
Cross laminated timber (CLT)

Formwork beams  
Shuttering panels

Pellets  
Briquettes

Pallet blocks

*At the heart of Europe*  
**AND THE WORLD**



Sawn timber

Single- & three-ply panels

Glulam

Cross laminated timber (CLT)

Formwork beams

Shuttering panels

Pellets

Briquettes

Bio power

Pallet blocks

pfeifergroup.com